

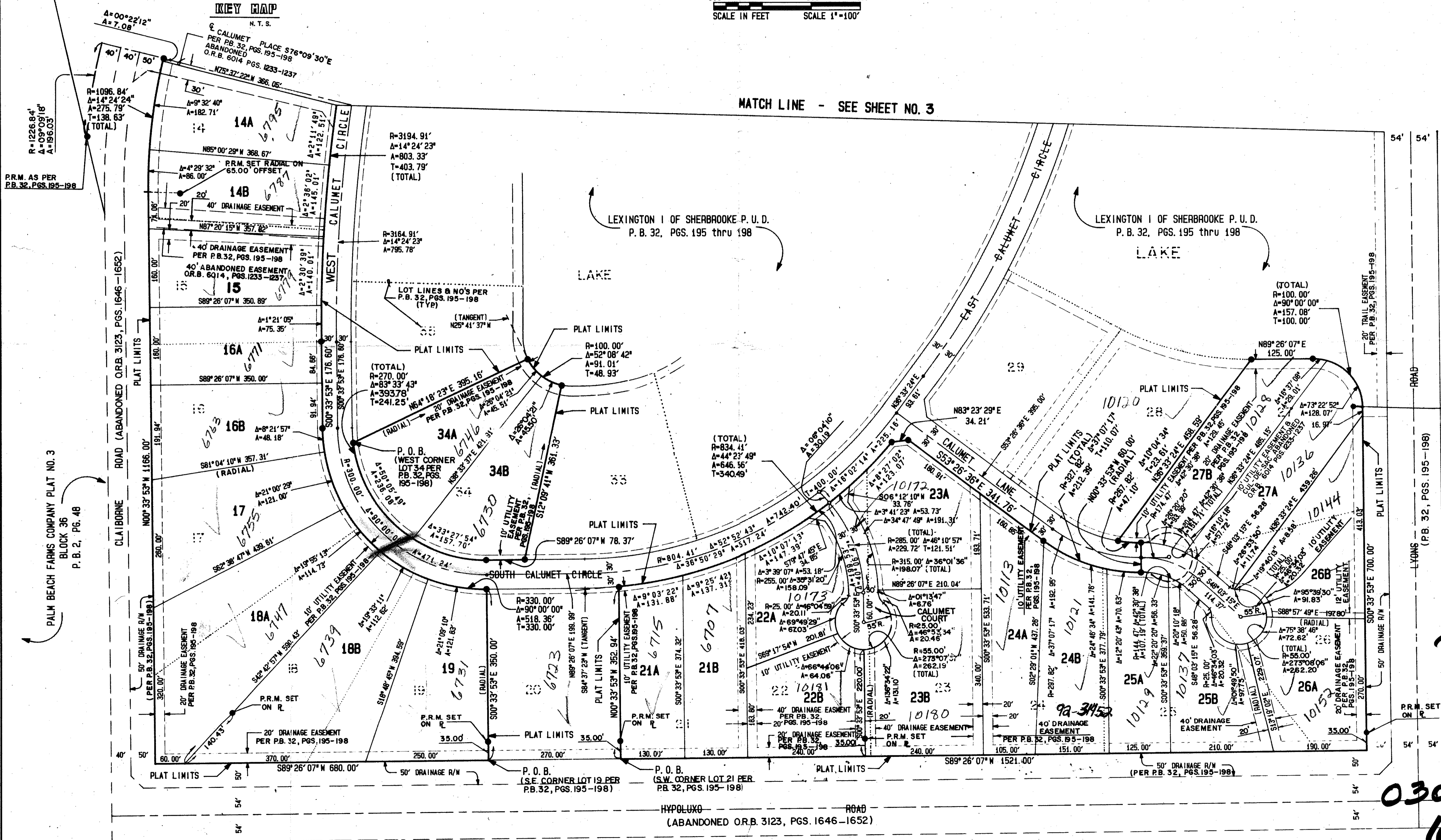
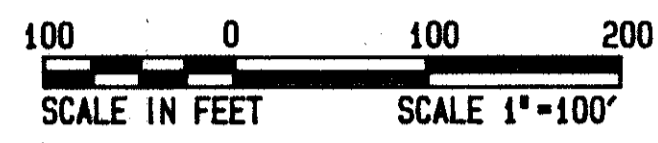
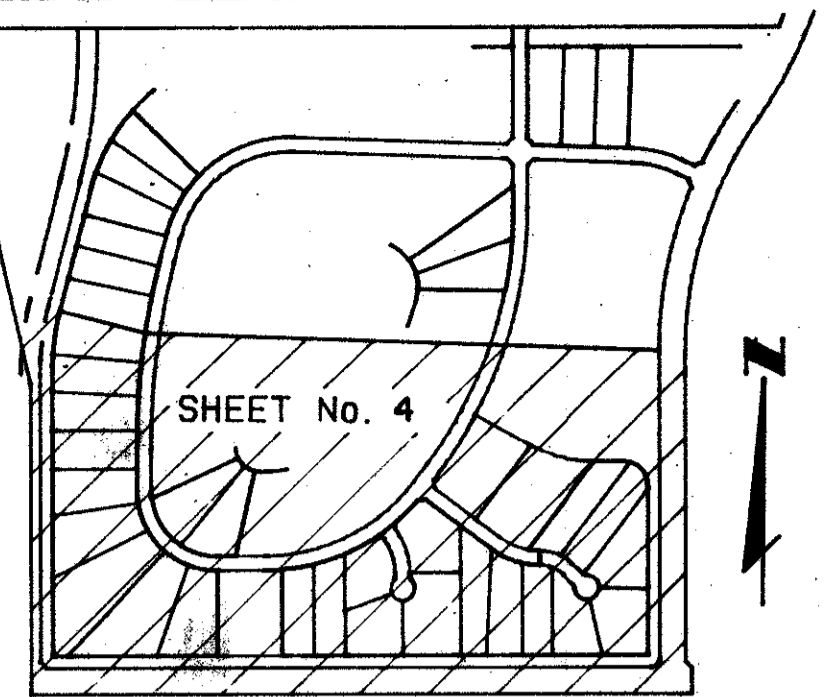
# REPLAT OF PORTIONS OF LEXINGTON I OF SHERBROOKE P. U. D.

# 179

BEING A REPLAT OF PART OF LOTS 3, 4, 11 THRU 19, 21 THRU 27, 34 AND 43 AND PART OF CALUMET LANE OF LEXINGTON I OF SHERBROOKE - P. U. D. AS RECORDED IN PLAT BOOK 32, PAGES 195 THRU 198, INCLUSIVE, OF THE PUBLIC RECORDS OF PALM BEACH COUNTY, FLORIDA, BEING MORE PARTICULARLY DESCRIBED AS FOLLOWS:  
 LYING IN SECTION 6, TOWNSHIP 45 SOUTH, RANGE 42 EAST  
 PALM BEACH COUNTY, FLORIDA  
 IN FOUR SHEETS SHEET No. 4

GEE & JENSON  
 ENGINEERS - ARCHITECTS - PLANNERS, INC.  
 WEST PALM BEACH, FLORIDA  
 JANUARY 1989

STATE OF FLORIDA  
 COUNTY OF PALM BEACH  
 This plat was filed for  
 record at \_\_\_\_\_ M. \_\_\_\_\_ day  
 of \_\_\_\_\_ 1992, and duly  
 recorded in Plat Book No. \_\_\_\_\_  
 on Pages \_\_\_\_\_ and \_\_\_\_\_  
 Clerk Circuit Court  
 By: \_\_\_\_\_ D. C.



MATCH LINE - SEE SHEET NO. 3

LEXINGTON I OF SHERBROOKE P. U. D.  
 P. B. 32, PGS. 195 thru 198

LEXINGTON I OF SHERBROOKE P. U. D.  
 P. B. 32, PGS. 195 thru 198

PALM BEACH FARMS COMPANY PLAT NO. 3  
 BLOCK 37  
 P. B. 2, PG. 48

PET. 76-139A  
 COLLECT

0309-008  
 68/179

COMPUTED D. N. LEI/CADD  
 DRAWN D. N. LEI/CADD  
 CHECKED J.A.D.  
 APPROVED [Signature]  
 JOB NO. 87-550

PALM BEACH FARMS COMPANY PLAT NO. 3  
 BLOCK 43

REPLAT OF PORTIONS OF LEXINGTON I OF SHERBROOKE